

## STRAIGHT RUNNING NETS

## ALPHAbelt S2825

### TYPE: SEMI-GRID.

Modular conveyor belt with **pitch 25 mm.**

The **surface that contacts the conveyed product** is completely closed, smooth and especially glossy, so as, on the one hand, **to retain the minimum quantity of remnants** and, on the other hand, to be **cleaned properly, easy and fast.**

Its **open surface** is **20%**, created by openings 13 X 1,3 mm.

The **bottom surface of the belt is also smooth and glossy**, without any remnants retaining points and infection outbreaks, **so as to be cleaned properly, easy and fast**, equally to its top surface.

The **connection rod** of the segments has diameter 5 mm.

The **motion transmission** is made by the plastic sprockets S2825.

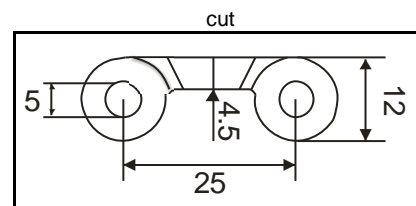
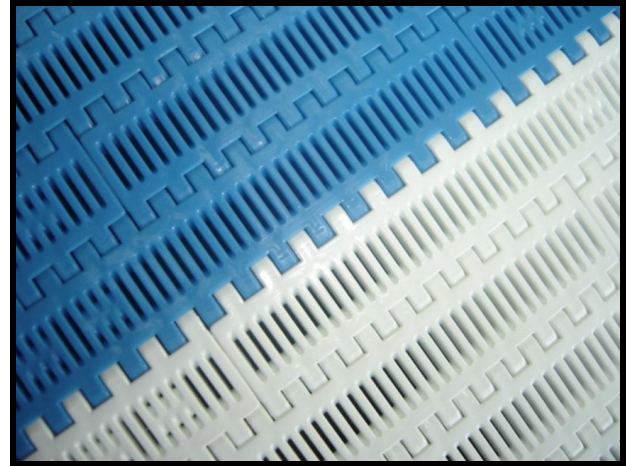
The belt Grid works with **Escalator flights and Side Guards**, with which we create **Escalators** and belts with independent lanes.

The **Escalator Flights** of the series 2825 are designed to have the **minimum remnants retaining** and to have the **advantage of a proper, easy and fast cleaning.**

The **Side Guards** of the series 2825 are built-in the edge segments, so as, on the one hand to be **more firm** than the other, and on the other hand, their use to belts and escalators to be **more economic.**

Material	PP	PE
Color	sky blue, white <input checked="" type="checkbox"/> <input type="checkbox"/>	white <input type="checkbox"/>
Traction power max(Nw/m belt's width)	7000	6000
Temperature (°C)	+5 +95	-50 +60
Open surface	20%	
Net weight Kg/m2	4,8	5

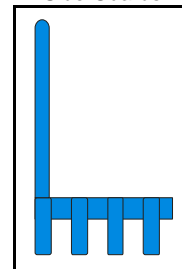
For detailed information on the **resistance of the materials in chemicals**, as well as on other useful information, please see the attached Plastic Specifications.



Escalator Flights



Side Guards



Sprockets

